

RE027: Resolution's Outdoor IP HD Camera Quick Set-Up Guide



Light Sensor

Lens

IR LEDs behind panel

Microphone

Status LED

In your package, you should find:

- (1) Security camera
- (1) Antenna
- (1) Software CD
- (1) AC power adapter
- (1) Mounting bracket set
- (1) Camera stand

LED Colors:



RED SOLID Power up. Or Network failed.



GREEN & RED FLASHING upgrading firmware.



FLASHING GREEN Network connectivity to AP.



BLUE SOLID operating in default AP mode.



FLASHING BLUE WPS discovery mode.



ORANGE FLASHING restoring defaults.

NO LEDs powered off.

Open door with screw driver

(bottom right) WPS Button Reset Button



Mounting Hole

Power & I/O Combo Cable



Micro SD Card

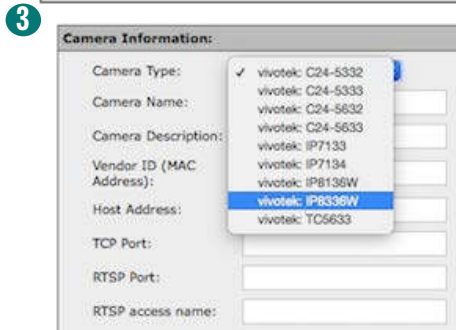
Camera assembly: (POWER UP AFTER REGISTERING MAC ID-NEXT PAGE)

- Connect camera antenna (1 & 2)
- Install camera stand (3)
- Connect AC power into I/O power cable and then into selected outlet
- Drill holes where installing. Insert plastic anchors. Mount camera stand to anchors with included screws.



Dealer portal setup:

- Ensure camera is powered down
- Select “Accounts” on left side. Load customer’s account
- Select “Camera” on left side. Select “Add” to add a camera
- Select camera type from drop down menu. Select: “vivotek IP8336W”. Enter name and description if desired
- Enter camera MAC address. This is located on back of camera
- Enter the following user name and password: UN: root PW: Camera’s MAC ID
- Select “Add”
- Power camera back up
- Camera LED will be red then blink green and blue



Wi-Fi Setup when router has no WPS button:

If it does have WPS: Open bottom camera slot exposing the WPS button (previous page) press & hold WPS button on camera & router. LED will flash green.

- You will need a smartphone or computer
- In your devices wifi settings find the network named TCSN-(last 6 of MAC XX:XX:XX)
- Once connected, camera will be flashing blue and green. This indicates the camera is in access point mode (AP mode)
- On your smartphone or computer open a web browser. Enter "http://192.168.1.1" without quotes
- The page will open to a login screen.
- Username: root
- Password : (MAC address all upper case)
- Select "Search your AP"
- Select your WiFi network
- Enter the WiFi password in the Pre-shared key field, removing the string of 0's
- Save, image number 4 will appear
- After a moment the camera light will go from solid green to blinking green, this will indicate the camera is connected

